



EMERGENCY MANAGEMENT PROGRAM

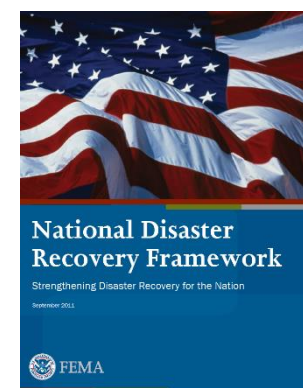
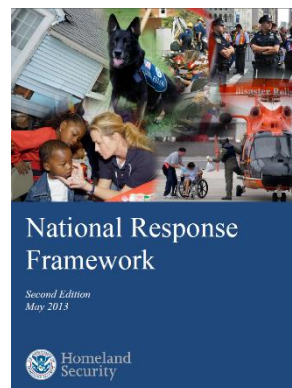
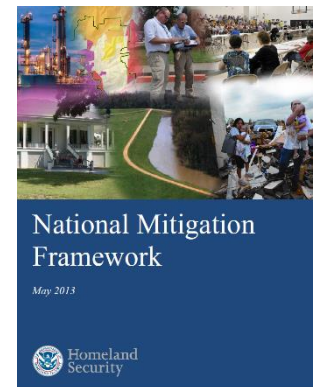
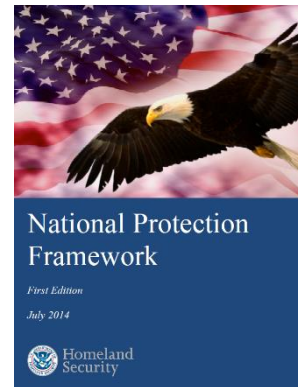
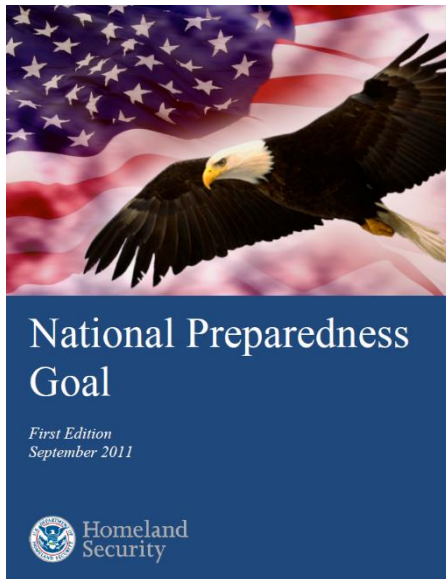
Seattle City Light

Jerry J. Koenig | April 28, 2016

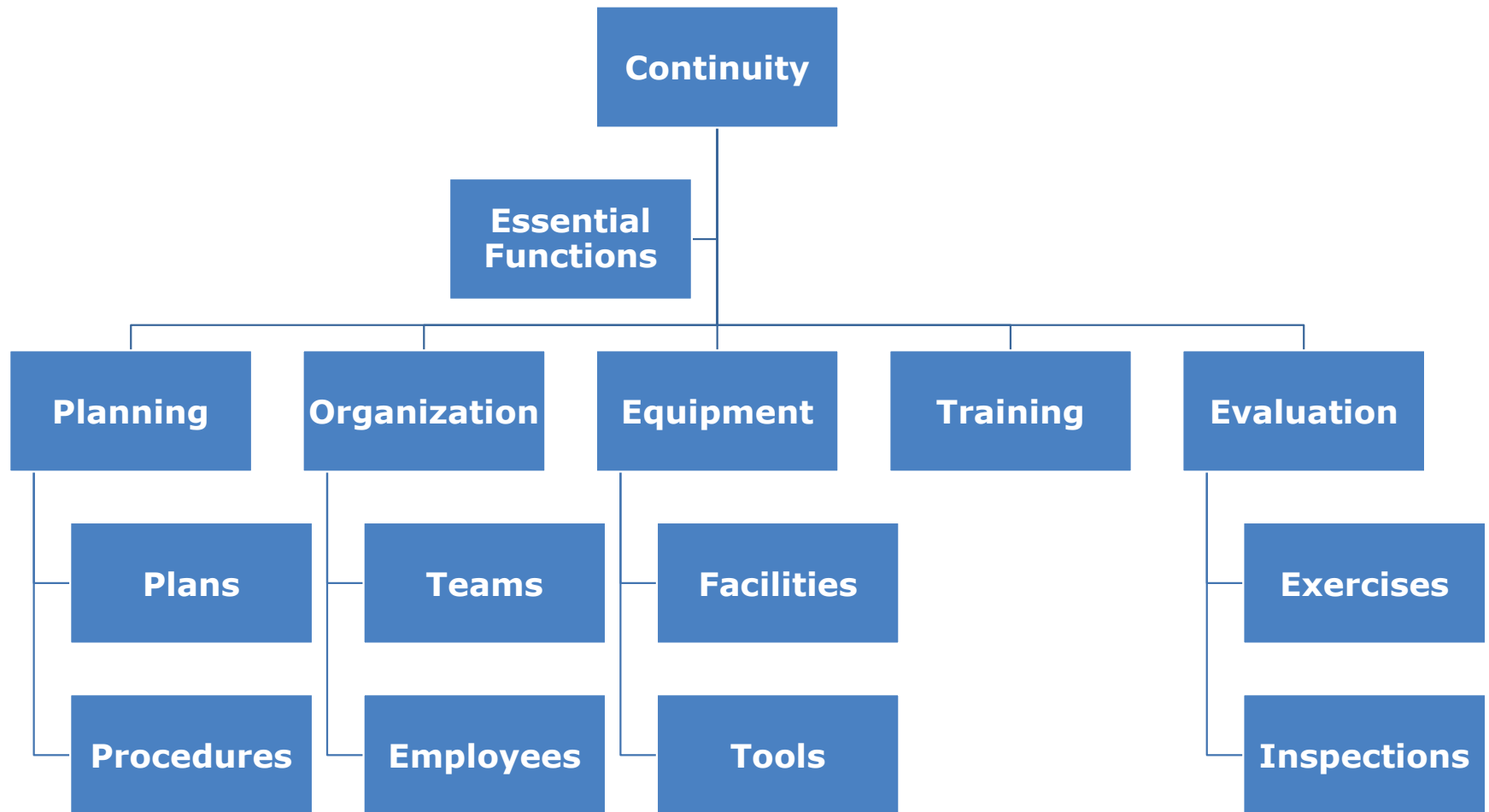


WHAT DOES A PREPARED NATION LOOK LIKE?

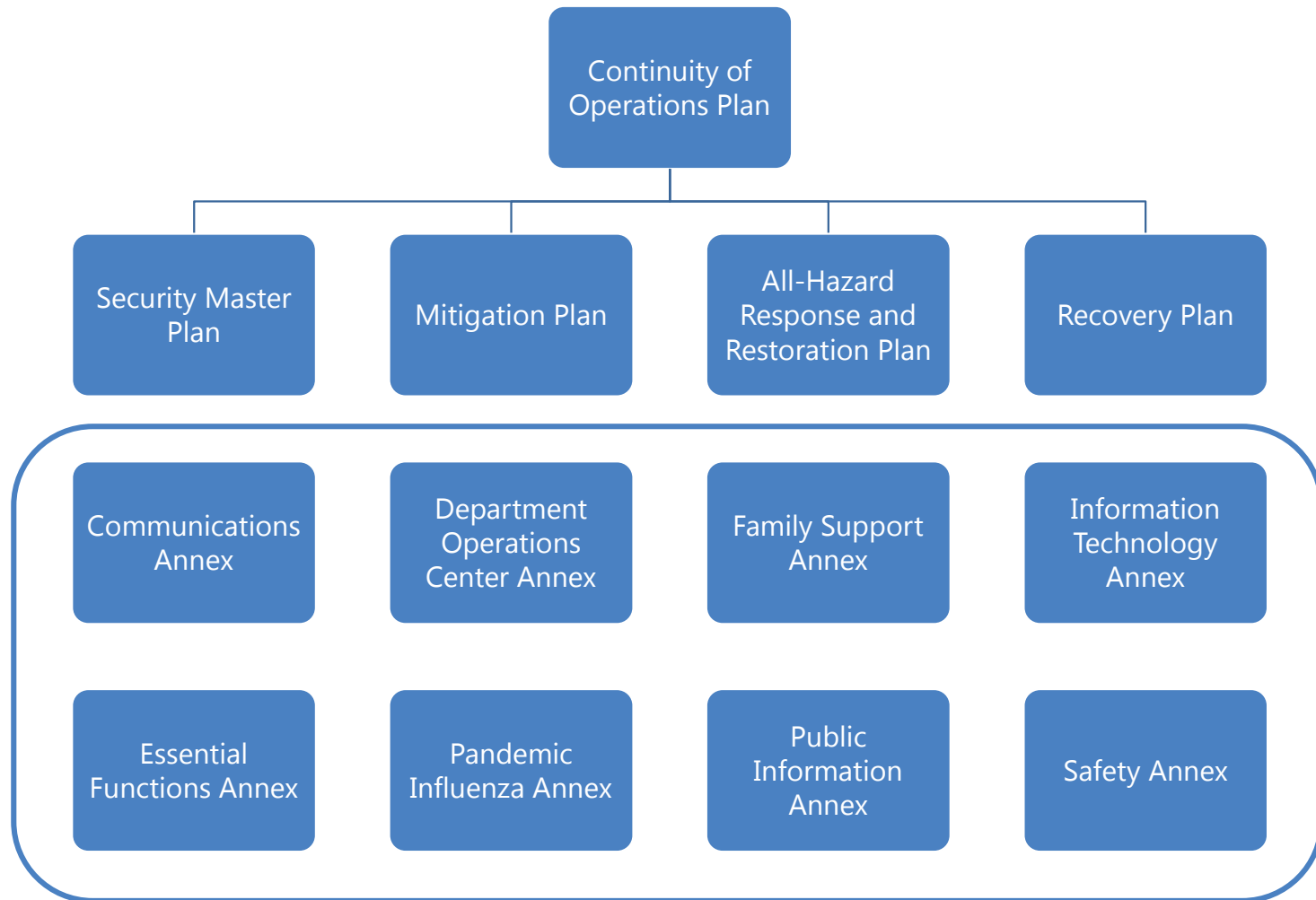
- Presidential Policy Directive - 8



PLANNING ELEMENTS



CONTINUITY OF OPERATIONS PLANS AND PROCEDURES



CONTINUITY OF OPERATIONS PLANS AND PROCEDURES

Continuity of Operations Plan

**Security
Master Plan**

**Mitigation
Plan**

**All-Hazard
Plan**

**Recovery
Plan**

Annexes

**Operations
Section
Procedures**

**Planning
Section
Procedures**

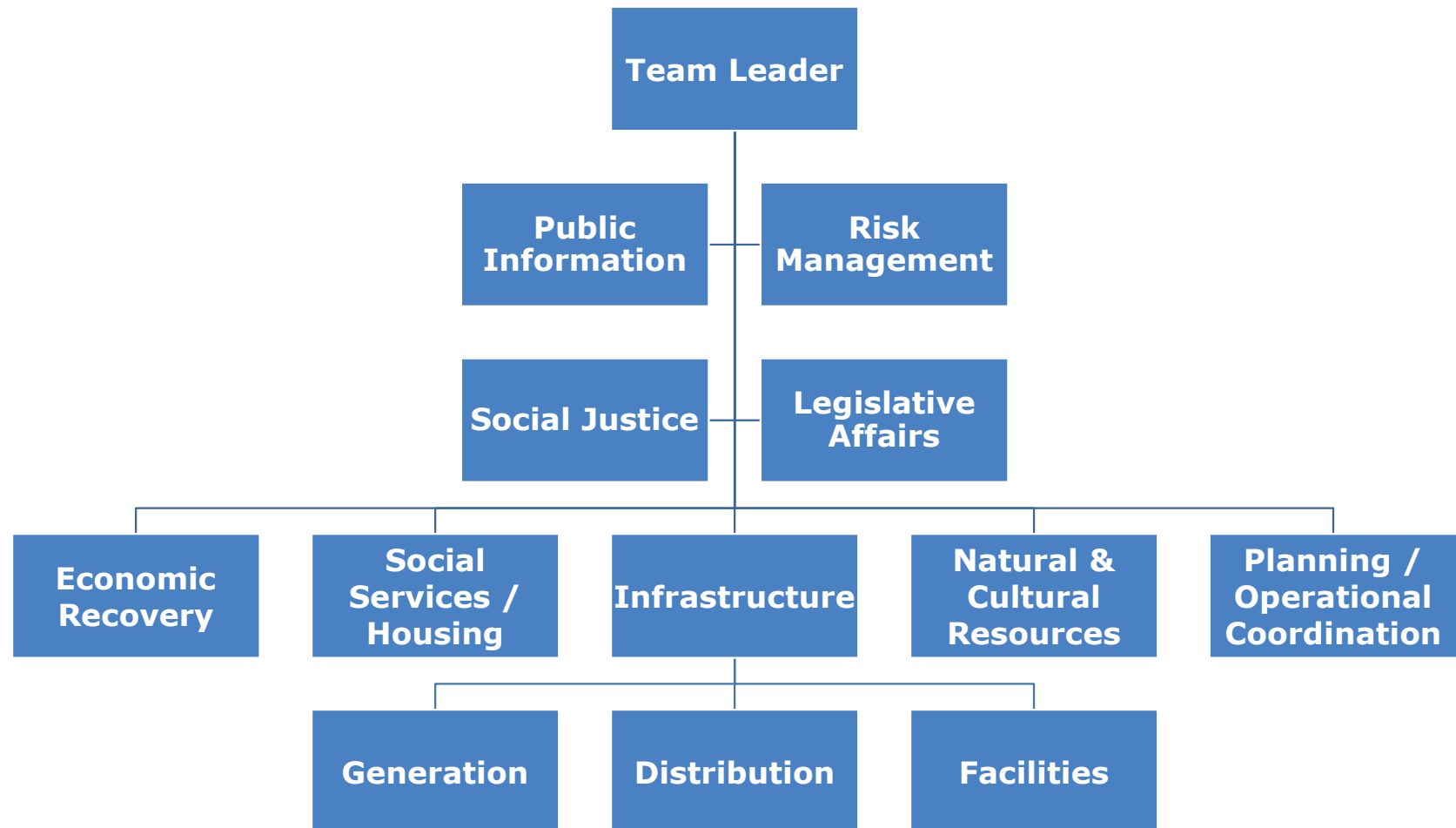
**Logistics
Section
Procedures**

**Finance/Admin
Section
Procedures**

CONTINUITY OF OPERATIONS INCIDENT MANAGEMENT TEAM

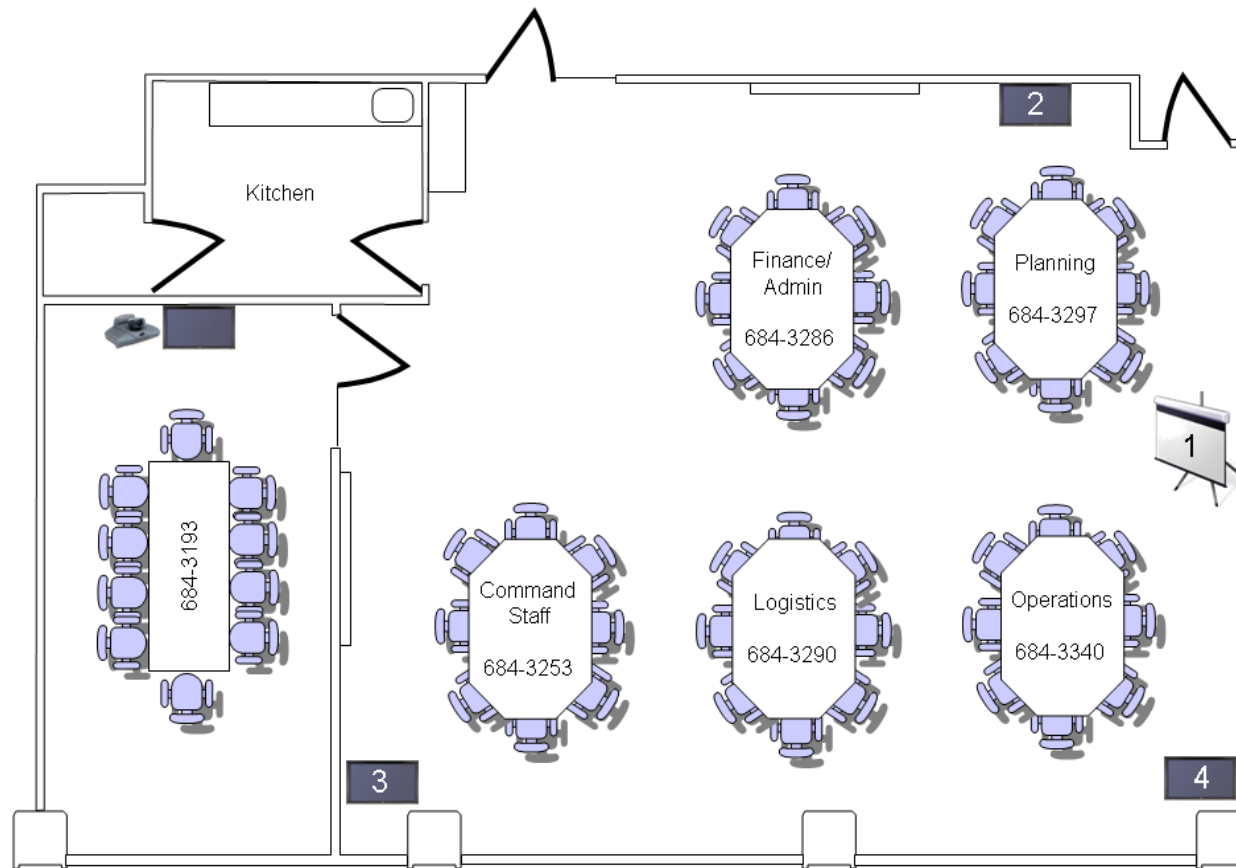


CONTINUITY OF OPERATIONS RECOVERY TEAM



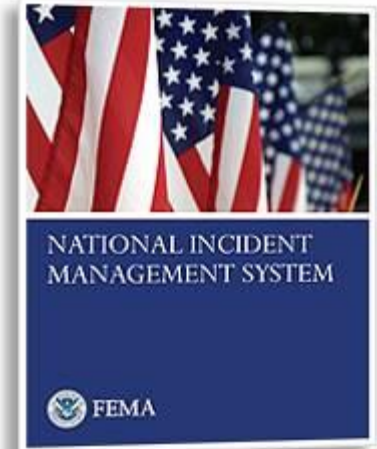
CONTINUITY OF OPERATIONS FACILITY

- Department Operations Center

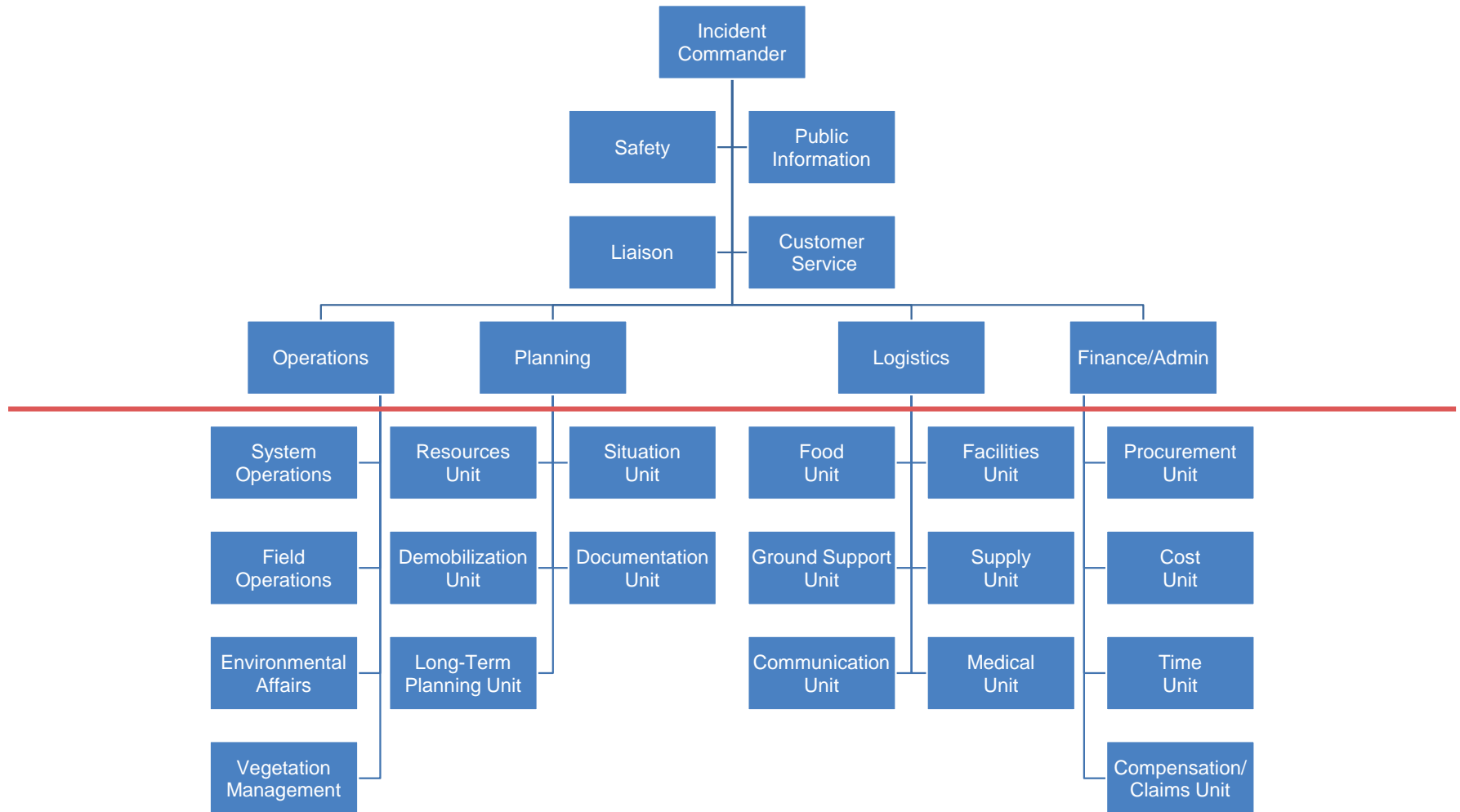


CONTINUITY OF OPERATIONS TRAINING

- The City of Seattle has adopted the National Incident Management System (NIMS) with the Incident Command System to manage incidents
- All staff assigned to the Incident Management Team are required to complete ICS-100, ICS-200, and IS-700
- All Unit Leaders and Branch Directors also complete ICS-300 and position-specific training
- All Command and General Staff complete ICS-400 and position-specific training



CONTINUITY OF OPERATIONS INCIDENT MANAGEMENT TEAM



CONTINUITY OF OPERATIONS TRAINING

- Seattle City Light's Incident Management Team currently has 226 members
- 151 have completed ICS-300, Intermediate ICS
- 61 have completed ICS-400, Advanced ICS

CONTINUITY OF OPERATIONS EVALUATION

- Seattle City Light conducts an after-action review after each activation of the IMT
- Conducts four exercises annually
 - One for the Mitigation Team
 - One for the Recovery Team
 - One discussion-based and one performance-based for the IMT
- Participates in other regional exercises

CONTINUITY OF OPERATIONS EVALUATION

- Seattle City Light conducts an internal evaluation annually based on the Continuity Guidance Circular (CGC) – 1 model and the National Fire Protection Association (NFPA) 1600 standard
- Conducts an external, third-party review biennially based on industry best practices
- Findings are managed through a Corrective Action Program

WHAT DOES A PREPARED UTILITY LOOK LIKE?

Jerry J. Koenig
Emergency Management Strategic Advisor
Seattle City Light
206-684-3095
jerry.koenig@seattle.gov

